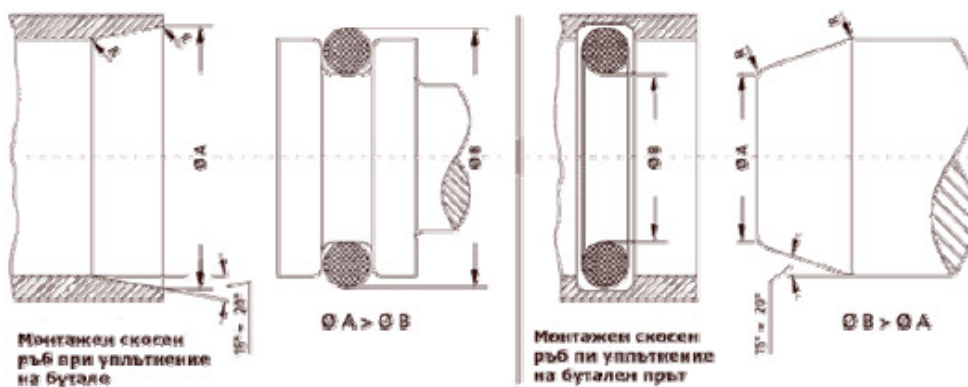
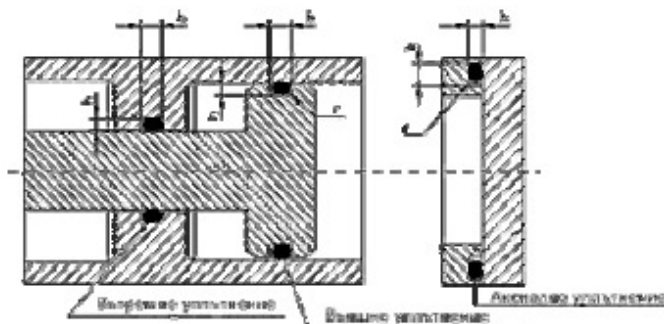


## Instructions for installation

To avoid damage during installation should always be provided with a splay edge angle  $15-20^\circ$  (see drawing). It is fitting to use fats and oils, while it is necessary to take into account the sustainability of the elastomer. Unacceptable are dirt or other residues in the slot of incorporation or the opposing sealing surfaces. To avoid strong twisting winding through o-rings. In the field of mounting o-ring should not have transitions with sharp edges, traces of machining, threading, or drilling.



## Dimensions for mounting of O-rings



All values of the dimensions that we need to know when installing the O-rings are derived from those recommended in Part 5 of DIN 3771 technical guidance. The calculated values are valid for O-ring of NBR with a hardness of 70 Shore A. For materials with different values of contraction may need a change in the depth of

the slot. For the calculation are taken into account up to 15% swelling. For elastomers with less than 15% swelling, the width of the slot can be reduced accordingly.